

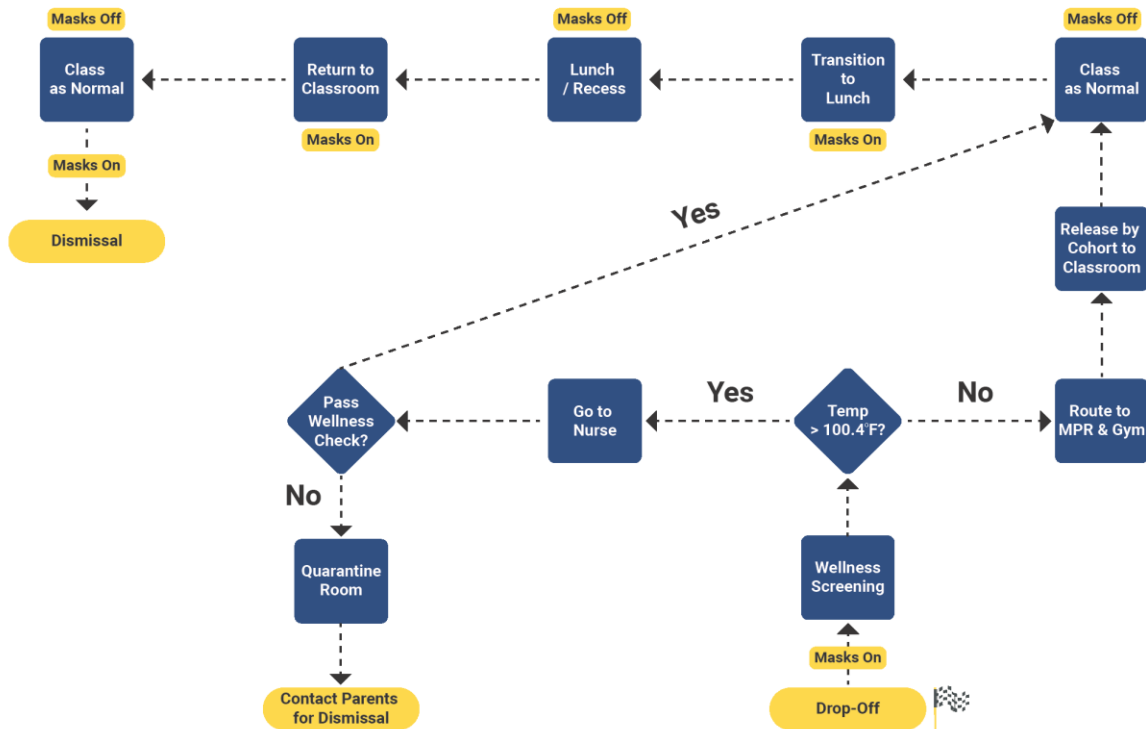


LYNX NEWS

August 26, 2020



A Day in the Life of a Monument Academy Student



Key Safety Precautions

- Enforcing Physical Distancing When Possible
- Required Mask use in Hallways
- Increased Cleaning & Hygiene Protocols



We are excited to welcome you to the 2020-2021 academic year!

To kick off this school year, we will be hosting our annual 'Meet and Greet;' however, it will be different than in the past. Safety is our top priority, so we will conduct a "Drive-Thru" Meet and Greet.

On your scheduled day (listed below), you will bring your student(s) to the Elementary School West Campus with all their school supplies in your trunk, drive through the carpool lane, and meet their teacher(s). Teachers will have the opportunity to meet you and collect supplies, which will be taken to their respective classrooms. If you ordered an *EduKit*, those will be delivered to your child's classroom, so you will just drive through to meet your student(s) teacher(s).

For the process to be successful, here is how it will work:

~ Enter the church parking lot and drive down the carpool lane to the curb.

~ First stop: drop off general supplies (i.e. Kleenex, paper, etc.) by the Gym Entrance. Please have these items in your trunk separate from other 'desk' supplies. MA Staff will take the items from your trunk & put them in grade-level bins. **Please remain in your car at all times.**

~ Pull forward to meet your teacher. To keep the process moving along, please write your teacher's name on a sign & place it so it is visible from your windshield. This will help teachers know which cars they need to visit. Have all desk supplies in a bag in your trunk labeled with your student's first and last name as well as their teacher's name. The teacher will remove the supplies from your trunk. Again, **please remain in your car at all times**

The 'Meet and Greet' schedule is as follows:

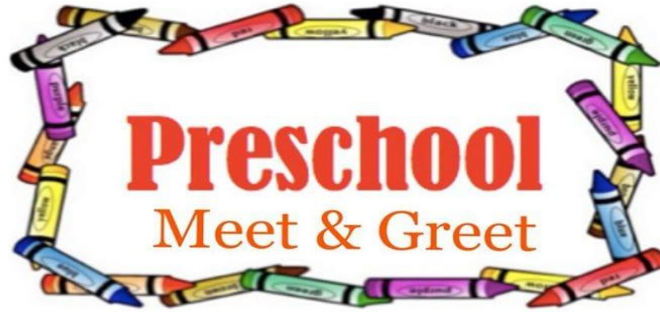
Thursday, August 27, 8:00-11:00 a.m.: Kindergarten, 2nd, and 4th grades.

Friday, August 28, 8:00-11:00 a.m.: 1st, 3rd, and 5th grades.

It is important to note that parents will not be allowed to walk their student(s) to class on the first day of school. If you are unable to attend the 'Meet and Greet,' your student(s) will be responsible for bringing their supplies on the first day of school.

We look forward to a great year!

Mr. R and Ms. Barrette



Exciting news! We will be able to have our meet and greet [on Thursday, August 27, 12-4pm](#). Please see the designated times for your child:

[12pm-12:45](#): A-G Last Names

[1pm-1:45](#): H-M Last Names

[2pm-2:45](#): N-T Last Names

[3pm-3:45](#): U-Z Last Names

We will have staff directing you and your kiddo that day. We are excited to have our littlest Lynxes back on campus. We are looking forward to an exciting school year. You will be receiving more information this week about our daily program. Please email the Preschool Director, Mia Phillips: mphillips@monumentacademy.net, if you did not receive our *Back-to-School* email.



From the Registrar's Office: *Elementary class placements and Secondary student schedules will be available to view in your Infinite Campus Parent Portal on **August 26th**.*

If you do not yet have access to the Parent Portal, you may sign up for an account

by clicking this link: https://docs.google.com/forms/d/e/1FAIpQLSc-ASFyBqTZGDCj6DMCjJVHnrvZbmxnvyI7xjVu_RunTBq6CQ/viewform

Business Office



Thank you to the MA families who have submitted academic fees for the 2020-21 school year. These funds help Monument Academy provide excellent resources for your children.

The annual required student fees are as follows:

\$100 Preschool

\$125 Kindergarten

\$175 Grades 1-5

\$285 Grades 6-9 (includes iPad fee)

Please check your student's account using the Infinite Campus Parent Portal. Visit www.monumentacademy.net to sign up for an account if you have not already done so. Payments are usually posted within a week. However, during the month of August, it will likely take longer. Thank you for your patience as we are enrolling new families and delivering curriculum to classrooms.

Payment options at Monument Academy:

For Tuition, Fees and EPDs:

- Online Payments – <https://www.monumentacademy.net/quick-links/online-payments/>
- Checks – made payable to Monument Academy (drop box at front office)
- Credit card - contact jshook@monumentacademy.net to set up recurring payments

Monument Academy does not accept payments on the PaySchools Central app.

School Lunches:

Make checks made payable to LPHLP (Lewis Palmer Hot Lunch Program) – drop off at MA front desk or pay online at <https://www.myschoolbucks.com>

Financial Assistance: If you need assistance with fees and/or lunches please complete an application at: <https://www.myschoolapps.com/Application>

Contact Julie Shook,
Business Manager Monument Academy
(719) 481-1950 ext. 1709
jshook@monumentacademy.net



If your student needs a regular EARLY RELEASE time, please send an email to attendance@monumentacademy.net for approval. If your student will be walking home after school, they will need to carry a 'WALKER'S PASS' with them. A Walker Pass request form is available at the front office and attached at the end of the newsletter. If your student will be absent for any reason, please send an email to attendance@monumentacademy.net.

IMPORTANT NOTICE FROM THE SCHOOL NURSE

Chelsea Pierce, BSN, RN



NOTE: parents who need to drop off medications for their student at school **must** bring those medications to the designated 'nurse table' AFTER carline drop off on the first day of school at both campuses. An adult (**not** student) **must** bring those medications. Parents will need to park and walk them to the table that will be outside the main entrances between 8:00-9:00 a.m., after carline.

All health-related information and medical forms can be found on the MA website under the **Student support** health section. These forms include a COVID-19 symptom screening tool for parents, letters from the Colorado Department of Education regarding required immunizations needed for Preschool and K-5. Prescription and non-prescription medication permission forms, Allergy and Asthma action plans, as well as immunization exemption forms. Please take the time to review this health section and provide the appropriate forms that may be required for your student.



COVID-19 GUIDANCE

Can I go to school today?

At-home symptom screening for parents and staff

Parents and guardians can use these symptom checklists to determine when to keep their child at home based on the level of COVID-19 transmission in their community (e.g. Is the community in Protect Your Neighbor or Safer at Home or Stay at Home). School staff can also use this tool to determine if they need to stay at home. **Any student or staff diagnosed with COVID-19 or who is a close contact of a COVID-19 case should not go to school and should isolate or quarantine according to public health recommendations.**

These lists refer only to new symptoms or a change in usual symptoms. A student/ staff should not be kept home__ for usual symptoms they experience due to a chronic condition unless they are worse than usual. These guidelines are in addition to your regular school guidance (for example, a child with vomiting should also not attend school based on usual school guidance).

If your child is/ you are experiencing any potentially life-threatening symptoms, please call 911.

Low Community Transmission (Protect Your Neighbors):

If any of the following symptoms are present, keep the child at home/ stay at home, inform the school of symptoms, and reach out to a health care provider about COVID-19 testing and next steps for treatment.

- Feeling feverish, having chills, or temperature 100.4°F or higher.
- New or unexplained persistent cough.
- Shortness of breath. Difficulty breathing.
- Loss of taste or smell.

Sustained Community Transmission (Safer at Home or Stay at Home):

If any of the following symptoms are present, keep the child at home/ stay at home, inform the school of symptoms, and reach out to a health care provider about COVID-19 testing and next steps for treatment.

- Feeling feverish, having chills, or temperature 100.4°F or higher.
- New or unexplained persistent cough.
- Shortness of breath.
- Difficulty breathing.
- Loss of taste or smell.
- Fatigue.
- Muscle aches.
- Headache.
- Sore throat.
- Nausea or vomiting.
- Diarrhea.
- Runny nose or congestion.

COVID-19 At-home symptom screening for parents UPDATED 08/10/20

REMINDER:



Please remember...

We did not renew the lease to park in the dirt lot next to *LASER/Premier Vision*. That location is no longer available for MA parking.



Please see below for optional uniform jacket ordering information:

Webstore Link: <https://www.myschoolstoreco.com>

You will be required to enter an address when ordering; however, the order will not be shipped to you directly. Ordering is open until September 13th and all orders are printed at the same time. You will be notified by email when your order is ready for pickup at Monarch Merchandising (15706 Jackson Creek Pkwy #110, Monument) approximately 2-3 weeks after the order due date shown on the site, most likely by the end of September.



Calendar

August

27th - Back To School

28th - Back To School

31st - Kindergarten Meet Up

September

17th - General PTO Meeting

Upcoming

Fun Run 2020

Contact Us

President
Kim Stoltenburg
maptopresident@gmail.com

Vice President
Jessica Mayfield
maptovicepresident@gmail.com

Treasurer
Samantha Brown
maptotreasurer@gmail.com

Secretary
Maggie Richert
maptosecretary@gmail.com

PTO West News



Meet us at the Back to School events and sign up to learn more about events and volunteer opportunities!

See school information for dates and times!

We want to hear from our Parents and Teachers!



Take our Survey and tell us what you want us to focus our fundraising efforts on this year!!
<https://forms.gle/fetTb7aQe8HVibJz7>

King Soopers Rewards Sign Up



King Sooper Community Rewards program is now active just in time for all your shopping. It is super easy to set-up and then automatic every time you shop. It does not take away from your personal fuel points or coupons. Our PTO will simply get a percentage back of all purchases. So Sign Up today to Help MA:

1. Log on to your personal account on Kingsoopers.com (you cannot do this from the app)
2. Click " My account" under Valued Customer tab at the top of the page
3. Community Rewards (menu on the left side)
4. Add Organization: type in "Monument Academy"; then click Monument Academy "BF553"
5. Enroll



Thanks to all of the King Soopers Rewards money, we were able to put in a brand new GAGA BALL PIT!



PTO West News

Calendar

August

27th - Back To School

28th - Back To School

31st - Kindergarten
Meet Up

September

17th - General PTO
Meeting

Upcoming

Fun Run 2020

Contact Us

President
Kim Stoltenburg
maptopresident@gmail.com

Vice President
Jessica Mayfield
maptovicepresident@gmail.com

Treasurer
Samantha Brown
maptotreasurer@gmail.com

Secretary
Maggie Richert
maptosecretary@gmail.com

Business Directory

Have you ever wanted to connect with other Monument Academy Family Businesses? This year we are launching a new business directory! If you would like to have your business listed on our new directory please email the following to maptovicepresident@gmail.com:



1. Business Name
2. Business Logo (.png or .jpeg)
3. Website address
4. Brief description of business type

Friday Snacks

The PTO will not be providing "Friday Snacks" this fall.

**FUN RUN
IS
COMING**



STAY TUNED...

<http://monumentacademypto.com/fun-run>



OR



BOO-HOO OR YAHOO!
MONUMENT ACADEMY
KINDERGARTEN
PARENT MEET UP

AUG. 31ST @ 8:15
LIMBACH PARK
DOWNTOWN MONUMENT

**Kindergarten Parents and younger siblings
come join PTO and other Kindergarten parents at a
meet up at the park. Ask questions and get to know
other MA parents. Bring your own coffee.**

**We will have tissues for those in tears or party blowers for
those cheering**





Monument Academy

Walker Pass Privileges

Dear Parents/Guardians,

Please read our expectations and sign the section below to indicate your agreement with our policies. The actual destination of your walking student needs to be entered on this form. Please note that we will not issue a Walker Pass if the student is walking to any of our neighboring businesses on Village Ridge Point, the exception being in the case of a parent being employed by that business, or the LDS Church Parking Lot. Passes will NOT be issued to students younger than third grade, unless accompanied by an older sibling. Once you return the signed form and it is approved, we will issue your student a Walker's Pass. Please understand that you are releasing Monument Academy from any carpool time liability by signing below.

- Walker's Pass must be out and shown to carpool workers when leaving the school building.
- Students must follow instructions given by carpool workers. ○ Students crossing Highway 105 must cross at the light on Knollwood.
- The Walker's Pass may be revoked if rules/guidelines are not followed.

Please cut this off and turn it in to the Elementary Front Office.

Student's
Name _____ Grade _____

Walking Destination _____

Check Here if Destination is LDS Church Parking Lot _____

Parent's Printed
Name _____

Parent's
Signature _____

Date Signed _____

1150 Village Ridge Point, Monument, Colorado 80132
Phone: 719-481-1950 | Fax: 719-481-1948 | www.MonumentAcademy.net