

LYNX NEWS



East Campus Edition

August 26, 2020



Dear Parents and Guardians,

The first day is almost here! As promised in last week's letter, we have been working diligently to get our building ready to welcome you this week for kick-offs and meet and greets. We have come a long way, and we're still working! We are so excited to see Freshman today and our 6th, 7th, and 8th graders by appointment on Thursday and Friday. Please review the list of what to do and what to bring before each of these events.

I'm including our East Campus bell schedule and the Peak System in this edition. There will be more information to come about Read Time and Success Time in next Lynx News!

On Fridays, all students will be learning asynchronously. Assignments will be posted in Canvas and teachers will have office hours for student questions. Stay tuned for office hour schedules coming from your student's teachers.

See you soon!

Julie Seymour
Principal- Middle and High School

Masks at the Secondary School

Students at Monument Academy East Campus will be wearing masks as required by Governor Polis' mask mandate. Here's some info that may help!

Type of Masks

- Cloth face-covering required
- Gators are acceptable. Bandanas are not allowed.
- Designs, patterns, and colors are all fine as long as they show respect for self, others, and school.
- No messaging on masks

Mask Expectations: Following CDE guidelines and current mask mandate

- Students will wear masks into the building, in hallways, in classrooms, and at the end of day carline.
- Short mask breaks are allowed.
- Students may remove masks when outside if they are 6 ft or more apart from others.
- Students may remove masks at lunch and snack time (this one makes me smile!)



FIRST DAY DETAILS

As we rapidly approach the beginning of school, your MA Staff wanted to share what we hope a “typical” day will look like this year. Obviously, there will be many adjustments due to *COVID-19* and we must recognize that almost every scenario we plan for is subject to change. The mandates and guidelines we receive from our partners in education and government change weekly, if not daily.

We respectfully ask that students not be dropped off prior to 7:30 a.m., as classes do not begin until 7:50 a.m. this year. Students will be able to enter the building at 7:30, walk through the *ThermalScan*, drop off jacket and/or lunch box in assigned locker (no locks or combos) by first period class, and go directly to first period. Students inside the building prior to 7:50 will need to be inside their first period classroom.

Should an elevated temperature be detected upon entering the building, the student will quietly and respectfully be asked to report to the nurse. For the remainder of the day, we plan for business as usual. Students will attend their classes according to their IC schedule. There will be a “metered release” of students at the end of every class period with one-way hallway traffic directly to the next class. There are several different locations for student lunch, and students will be asked to remain socially distanced during this time.

We appreciate your support and patience as we enter this new challenge together! We know there will need to be changes and adjustments, but rest assured many of your MA staff have worked diligently all summer to make sure we have produced a safe and effective learning environment for all.

We cannot wait to see your students!

BACK~TO~SCHOOL EVENTS

If you have questions or concerns about paying school fees, please contact Julie Shook at 719-481-1950 x1709 or jshook@monumnetacademy.net. Fees are due August 21 and can be paid [here](#).

Wednesday, August 26: Freshman Kickoff Party! 3:00-5:00

Student and 1 parent are invited to Freshman Kickoff. Students may be in free dress code according to school policy. Check the policy [here](#)

Please Bring:

- General supply items from this [list](#)
- Your printed schedule from Infinite Campus [here](#). (Schedules will be available on August 26)
- 5x7 photo of yourself – can be a candid shot! Will be framed for our walls.
- A small item or letter for a time-capsule

To Do Before Arriving:

- Pay fees [here](#)
- Sign user agreements [here](#)

Student:

- Pick up iPad
- Drop off general supplies
- Walk schedule and meet teachers
- Get to know the Freshman class!
- Eat some Chick-fil-A!

Parent:

- Informational Session

Thursday, August 27: Grades 6, 7 & 8 Meet and Greet by Appointment: [Appointment Sign-up](#)
(Students may be in school free-dress code. Check the policy [here](#))

Friday, August 28: Grades 6, 7 & 8 Meet and Greet by Appointment: [Appointment Sign-up](#)
(Students may be in school free-dress code. Check the policy [here](#))

Please Bring:

- General supply items from these [lists](#)
- Your printed schedule from Infinite Campus [here](#). (Schedules will be available on August 26)

To Do Before Arriving:

- Pay fees [here](#)
- Sign the iPad user agreement [here](#)

Student and 1 Parent are invited to:

- Walk schedule and meet teachers
- Pick up iPad
- Drop off general supplies

Monday, August 31: First Day of School- Students in Uniform
7:50-3:30

Friday, September 4: First Remote Learning Friday- All students

7:50-12:30 All sixth grade and students new to Monument Academy need to complete and submit digital citizenship assignments via Canvas by 3:00 today (Access to course after iPad issued).

AT~HOME LEARNER BACK~TO~SCHOOL EVENTS

Here are some steps to make sure your at-home learner is ready to go on the first day of school!

1. Choose a time to pick up your iPad at Monument Academy K-5 West Campus on **Thursday, August 20**. [iPad Check-Out Appointment Times](#)

Please Bring:

General supply items from these [lists](#) if your student plans on being in-person at any point this year.

If you ordered Edukits, they may be available for pick-up on August 20 along with the iPad. If they have not arrived, we will make alternate arrangements for pick-up.

To Do Before Arriving:

Pay fees [here](#)

Sign the iPad user agreement [here](#)

2. Sign up for a Canvas tutorial on **Friday, August 21** [here](#). Your student may choose to attend in person or through Zoom link. There will be no more than 15 students in a tutorial session and students will be socially distanced by 6 feet. Temperatures will be taken before entering the K-5 West Campus at the Library/MPR entrance. If your student is a returning MA 7th, 8th or 9th grade student and/or they have a strong command of Canvas, you may skip this tutorial session.
3. If your student is comfortable with attending our meet and greet events and wants to see the school building and teachers in person on **August 26 (9th grade only), 27 and 28**, you may sign up for an appointment [here](#) if you haven't already done so.
4. At home learning students will have a chance to meet their teachers through Zoom on **August 26** at the following times. Your student will be sent a Zoom link through Canvas for this session.

9:00-9:30	<i>9th Grade Team Zoom Meet With At Home Learning Students</i>
9:30-10:00	<i>8th Grade Team Zoom Meet With At Home Learning Students</i>
10:00-10:30	<i>7th Grade Team Zoom Meet With At Home Learning Students</i>
10:30-11:00	<i>6th Grade Team Zoom Meet With At Home Learning Students</i>
11:00-11:30	<i>Fine Arts Team Zoom Meet With At Home Learning Students</i>
11:30-12:00	<i>Electives Team Zoom Meet With At Home Learning Students</i>

MIDDLE and HIGH SCHOOL PEAK SYSTEM

MA Middle School and High School incorporate a “Peak System” to support the academic, social and emotional needs of the middle and high school learner. This system provides an opportunity to meet the adolescent’s needs of autonomy, competence, relationship and fun so they can thrive during their middle school and high school years.

MISSION

The MA Peak System is a student-organizational structure for the middle school and high school designed to promote connections, support academic and character development and increase student leadership opportunities.

ORGANIZATION

MA middle school students are divided into five separate cross-graded groups called Mountain Peaks. These Mountain Peaks are an integral element of the MA Middle School program. Student leaders are selected through application and represent the Mountain Peak through the Student Council.

Each middle school Mountain Peak contains approximately 70 students and is overseen by three Peak Advisors. These Peaks remain together throughout the student’s middle school experience. Peak activities and support occur primarily during Block days every other week during lunch and Success time.

MA high school students are divided into 4 separate cross-graded groups called Collegiate Peaks. Leadership opportunities increase as Peak leaders mentor Middle School Mountain Peak leaders. Student Collegiate leaders are selected through application and represent the Collegiate Peak through Student Council.

Each high school Collegiate Peak is overseen by high school teacher advisors. The Collegiate Peak remains together for the duration of their high school years. Collegiate activities occur primarily during Block days every other week during lunch and success time.

Unique Outcomes for MA Middle and High School:

1. Strong school-family spirit spanning freshman through senior class divisions.
2. Robust opportunities for all MA upperclassmen to be trained as leaders through hands-on service gaining meaningful valuable leadership experience.
3. Robust leadership opportunities for MA underclassmen.
4. Strong interpersonal relationship skills for each MA student.
5. Focused support internalizing MA character development.

PEAK SYSTEM TERMINOLOGY:

Mountain Peaks--Groups of approximately 70 students, sixth through eighth grade

Collegiate Peaks--Groups of approximately 100 students (eventually), freshman through seniors

Peak Captains—Students in each Mountain or Collegiate Peak chosen through application by Peak Advisors to lead, convene and organize the Peak, representing it at all school-wide student-governance meetings.

Peak Advisors—Faculty members chosen to oversee the effective development of a Peak group and oversee and direct the day-to-day operations of the Peak System

School Captains—Two seniors who have been chosen by the school to help lead all the Houses.

Mountain Groups:

Lincoln- Red

Powell- Yellow

Elbert- Blue

Herman- Green

Evans- Purple

Collegiate Groups:

Mount Harvard

Mount Princeton

Mount Columbia

Mount Yale

Peak Activities: Each Mountain and Collegiate Peak will participate in various Peak events such as cookouts, service projects, team building activities, outings, tournaments, etc. Additionally, each Peak will develop its own traditions, customs, symbols and crests.

Mountain and Collegiate Peak Captains organize various school-wide events such as social activities (dances, proms, etc.), competitions, guest lectures, spirit rallies and service projects.

Peak Competitions: Each year the Mountains and Collegiates compete in various competitions.

The goal is to promote healthy competition that boosts spirit and encourages student participation and interaction.

Peak Assignments: Students are placed into each Mountain and Collegiate Peak by the MA administration with the assistance of the Student Council Directors. Placements are made with an intention to balance talents, skills and personalities in a way that best strengthens the positive characteristics, qualities and interpersonal strength of each individual and group.

Attention will be paid to such individual strengths as aptitude, confidence, athletic abilities, demonstrated leadership and any other appropriate qualities of distinction.

EAST CAMPUS BELL SCHEDULE

Lynx Day: NON-BLOCK WEEK- MONDAY THRU THURSDAY
BLOCK WEEK- MONDAY and TUESDAY

55 minutes	PERIOD 1	7:50-8:45
4 minutes		
53 minutes	PERIOD 2	8:49-9:42
4 minutes		
53 minutes	PERIOD 3	9:46-10:39
4 minutes		
53 minutes	PERIOD 4	10:43-11:36
4 minutes		

Lunch- 25 minutes Period 5-53 minutes	LUNCH A 11:40-12:05	PERIOD 5 12:09-1:02	Lunch A at 11:40
4 minutes			
Period 5-53 minutes Lunch- 25 minutes	PERIOD 5 11:40-12:33	LUNCH B 12:37-1:02	Lunch B at 12:37

4 minutes		
53 minutes	PERIOD 6	1:06-1:59
4 minutes		
53 minutes	PERIOD 7	2:03-2:56 No 8th dismissal at 2:55
4 minutes		
30 minutes (optional)	PERIOD 8	3:00-3:30 Dismissal at 3:30

EAST CAMPUS BLOCK-WEEK BELL SCHEDULE

	BLUE WEDNESDAY	Gold THURSDAY	
85 min	PERIOD 1	PERIOD 2	7:50-9:15
5 minutes			
30 min	FREE READING/BOOK STUDY		9:20-9:50
5 minutes			
85 min	PERIOD 3	PERIOD 4	9:55-11:20
5 minutes			
30 min	GRADES 6-8 LUNCH in Peak rooms	GRADE 9-10 LUNCH in Peak rooms	11:25-11:55
5 minutes			
85 min	PERIOD 5	SUCCESS	12:00-12:40 Peak Groups 5 minute passing 12:45-1:25 NWEA Goals/ HS Leadership
5 minutes			
85 min	PERIOD 7	PERIOD 6	1:30-2:55
5 minutes			
30 min	PERIOD 8		3:00-3:30

EAST CAMPUS DELAYED START BELL SCHEDULE

ALL WEEKS- MONDAY THRU THURSDAY

41 minutes	PERIOD 1	9:50-10:31
4 minutes		
41 minutes	PERIOD 2	10:35-11:16
4 minutes		
41 minutes	PERIOD 3	11:20-12:01
4 minutes		

Lunch- 25 minutes Period 5-41 minutes	LUNCH A 12:05-12:30	PERIOD 5 12:34-1:15	
4 minutes			
Period 5-41 minutes Lunch- 25 minutes	PERIOD 5 12:05-12:46	LUNCH B 12:50-1:15	

4 minutes		
41 minutes	PERIOD 4	1:19-2:00
4 minutes		
41 minutes	PERIOD 6	2:04-2:45 No 8th dismissal at 2:55
4 minutes		
41 minutes (optional)	PERIOD 7	2:49-3:30 Dismissal at 3:30

EAST CAMPUS DELAY-START BLOCK DAYS

	WEDNESDAY	THURSDAY	
73 min	PERIOD 1	PERIOD 2	9:50-11:03
5 minutes			
73 min	PERIOD 3	PERIOD 4	11:08-12:21
5 minutes			
30 min	GRADES 6-8 LUNCH in Peak rooms	GRADE 9-10 LUNCH in Peak rooms	12:25-12:55
5 minutes			
73 min	PERIOD 5 1:00-2:13	SUCCESS	1:00-1:34 Peak Groups 5 minute passing 1:39-2:13 NWEA Goals/ HS Leadership
5 minutes			
72 min	PERIOD 7	PERIOD 6	2:18-3:30

Registration Information

From the Registrar's Office: *Secondary student schedules will be available to view in your Infinite Campus Parent Portal on August 26th.*

If you do not yet have access to the Parent Portal, you may sign up for an account by clicking on this link: https://docs.google.com/forms/d/e/1FAIpQLSc-ASFyBqTZGDCj6DMCjJVHnrvZbmxnvyl7xjVu_RunTBq6CQ/viewform

Business Office



Thank you to the MA families who have submitted academic fees for the 2020-21 school year. These funds help Monument Academy provide excellent resources for your children.

The annual required student fees: \$285 Grades 6-9 (includes iPad fee)

Please check your student's account using the Infinite Campus Parent Portal. Payments are usually posted within a week. However, during the month of August, it will likely take longer. Thank you for your patience as we are enrolling new families and delivering curriculum to classrooms.

Payment options at Monument Academy:

For Tuition, Fees and EPDs:

- Online Payments – <https://www.monumentacademy.net/quick-links/online-payments/>
- Checks – made payable to Monument Academy (drop box at front office)
- Credit card - contact jshook@monumentacademy.net to set up recurring payments

Monument Academy does not accept payments on the PaySchools Central app.

NOTE: parents who need to drop off medications for their student to use at school must bring those medications to the designated 'nurse table' AFTER carline drop off on the first day of school at both campuses. An adult (not student) must bring those medications. Parents will need to park and walk them to the table that will be outside the main entrances between after carline.

OTHER HEALTH

Also, please make sure you provide updated immunizations or personal/religious/medical exemptions (these are required to be updated **yearly**) for your students for the 2020/2021 school year even if you have chosen the online synchronous, asynchronous, or home-school options. If your student is enrolled with Monument Academy, these are still required for our records.

All health-related information and medical forms can be found on the MA website under the **Student support** drop down. These forms include COVID-19 symptom screening tool for parents. In addition, immunization exemption forms also can be found.

Chelsea Pierce, BSN, RN
Monument Academy

ASSESSMENTS

NWEA Assessments planned for Tues/Wed/Thu 9/8, 9/9, & 9/10.

FROM THE SOCIAL WORKER

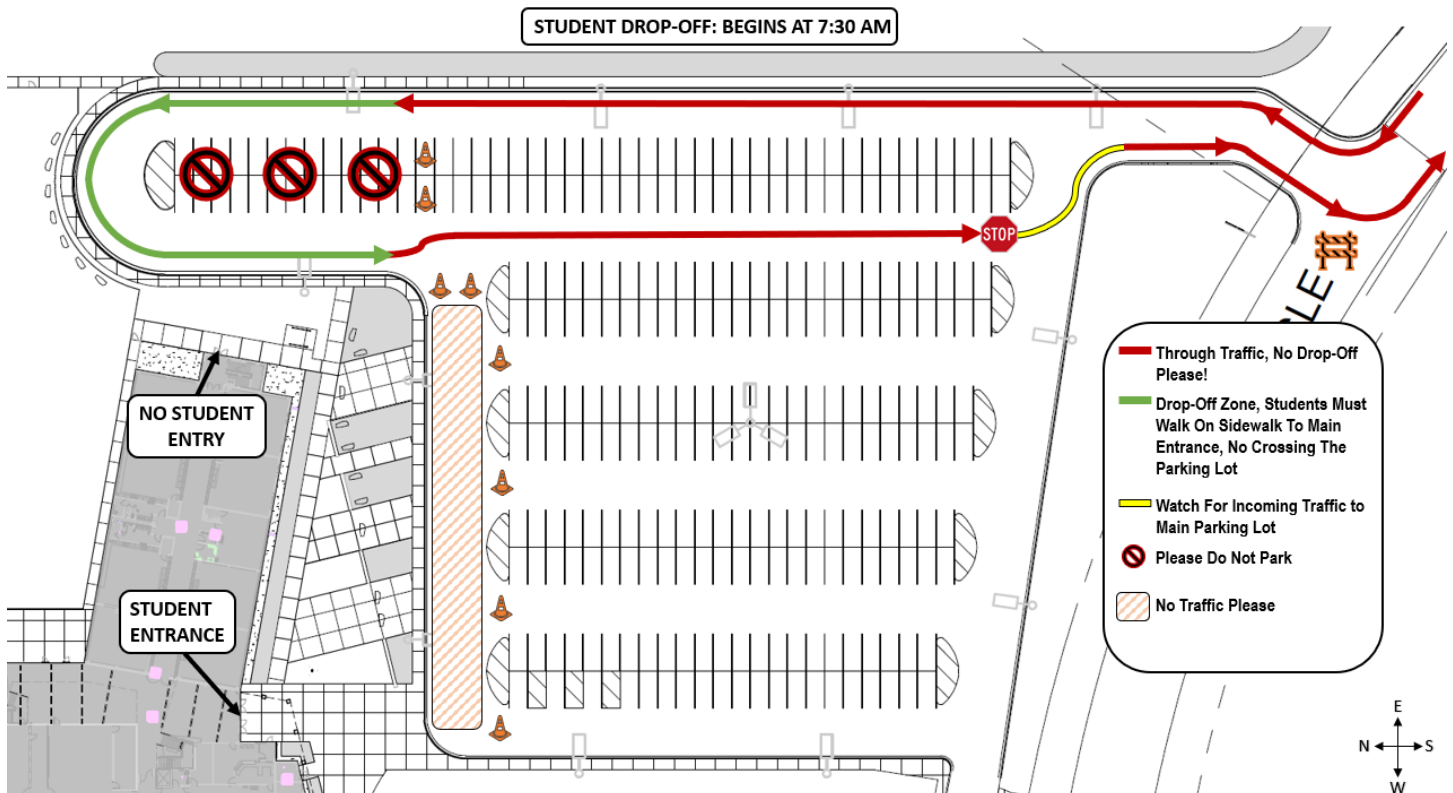
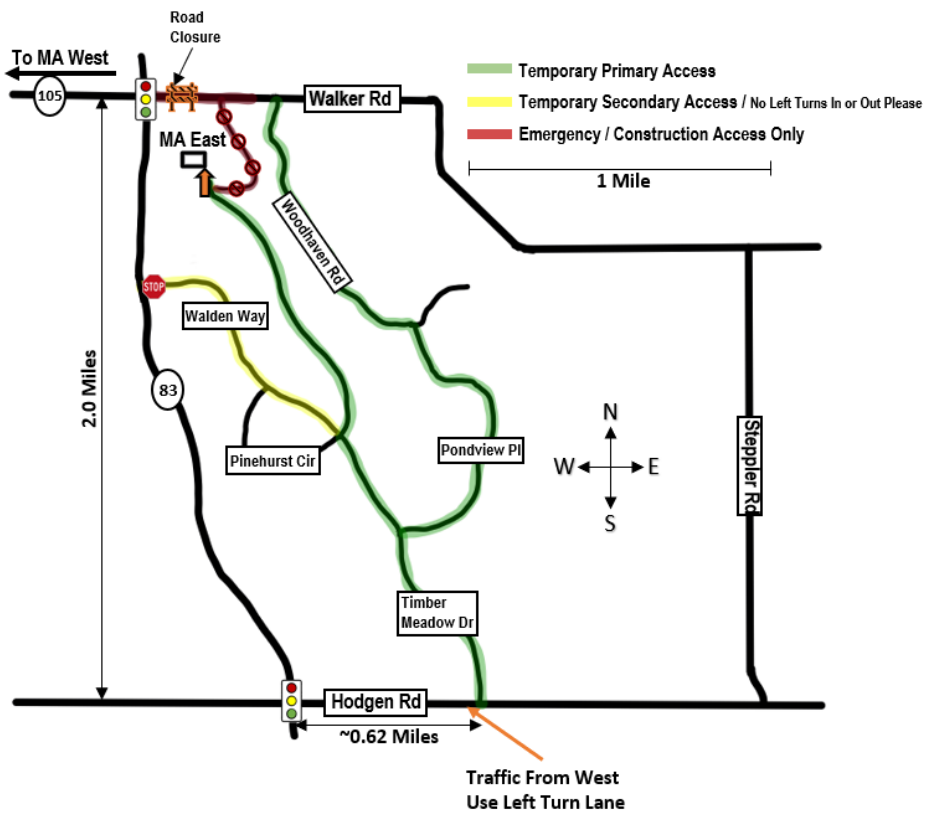
Returning from summer break is a time for educators/staff to reflect on how students have grown, observe how they have matured, and hear about their summer adventures! This year the return to school will be special; the absence of students in our lives for over five months makes us even more eager to greet and build relationships that define Monument Academy. We just plan to do it in a beautiful new building this year!

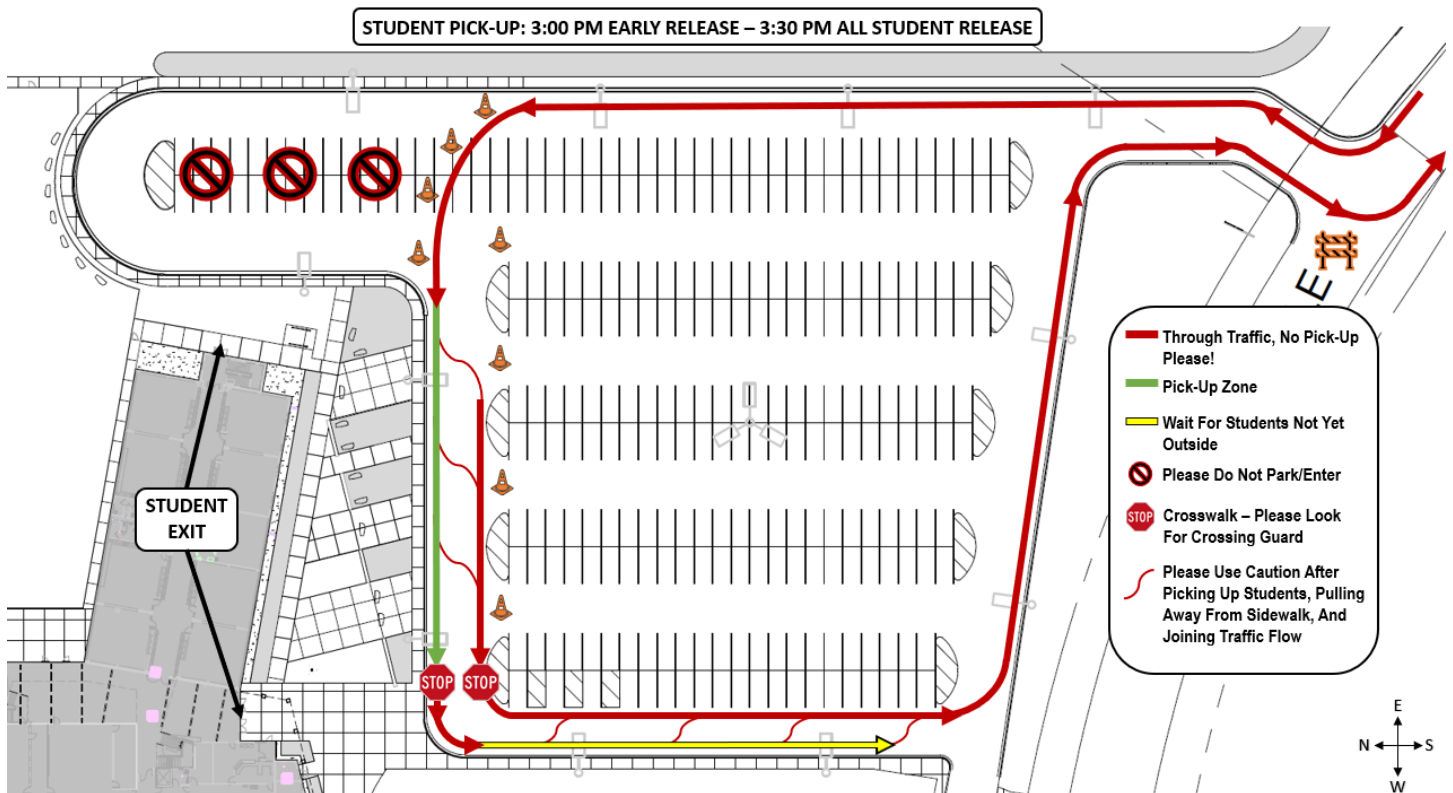
I understand there are many unknowns, and this transition may cause more anxiety and stress than excitement. I want you to know that I am here to support the students, staff, and families during this time. For the students, this support will initially be in the form of guidance lessons, assisting teachers where/when needed, and helping families with resources that may be useful. You can reach me at chowarth@monumentacademy.net with any concerns or questions that you may have.

Carrie Howarth, LSW, SSW
Monument Academy Social Worker

EAST CAMPUS CARLINE

Please see the map below for current access to our building:





ATHLETIC NEWS

Program	CCAL Season
Cross Country	8/10 – 9/25 “Post-Season” Through 10/9
Matchwits/Chess	Not Decided Yet
Cheer	1/4 – 4/30
Boys’ Basketball	1/4 – 2/1
Girls’ Basketball	2/2 – 3/1
Football	3/29 – 5/8
Girls Volleyball	4/5 – 4/30
Track and Field	4/26 – 5/29
Girls’ Soccer	5/3 – 5/26

Please visit our Athletic webpage for more information:


<https://www.monumentacademy.net/athletics/>

We Need Your Help

We are funding a new PTO at Monument Academy East and we need your help to get off on the right foot.



Please consider donating \$25 per child (or more if you can) to help us do teacher appreciation lunches, teacher dedications and to have the ability to help teachers when they are in need.



We will have a table at Meet & Greet to answer questions and collect any donations. We thank you for your support!



Monument
Academy
EAST PTO

For questions please contact Tanja at:
maeastptopresident@gmail.com



Monument Academy

Walker Pass Privileges

Dear Parents/Guardians,

Please read our expectations and sign the section below to indicate your agreement with our policies. The actual destination of your walking student needs to be entered on this form. Once you return the signed form and it is approved, we will issue your student a Walker's Pass. Please understand that you are releasing Monument Academy from any carpool time liability by signing below.

- Walker's Pass must be out and shown to carpool workers when leaving the school building.
- Students must follow instructions given by carpool workers.
- The Walker's Pass may be revoked if rules/guidelines are not followed.

Please cut this off and turn it in to the East Campus Front Office.

Student's
Name _____ Grade _____

Walking Destination _____

Parent's Printed
Name _____

Parent's
Signature _____

Date Signed _____