

# LYNX NEWS



*West Campus*

March 30, 2022



Dear Parents of MA West Campus,

Our watch D.O.G.S. program is a great way for our dads to volunteer in our school. We only have 15 more slots to fill this year. If you would like to sign up for one of these days, please visit this website.

<https://signup.com/go/sVvbhCq>

Thank you for all you do for our community,

Kurt Walker

Assistant Principal



Just a reminder to please pick up your students on time from any after school programs/activities.

**Landsharks Running Club** - the Spring Landshark program is full but in need of another assistant coach who can be at the practices. If interested, please contact Kelly Collier at [kcollier@monumentacademy.net](mailto:kcollier@monumentacademy.net).

## CMAS Information for Grades 3-5

Dear Parent(s)/Guardian(s),

If your child is in 3rd - 5th grade, we are approaching that time of year when we administer the CMAS test (CO State Standardized Assessment).

Assessments will begin on April 11th and conclude on April 21st.

- 5th Grade testing dates are 4/7 - 4/13 (Science, ELA, and Math) \*
- 4th Grade testing dates are 4/13 - 4/19 (ELA and Math) \*
- 3rd Grade testing dates are 4/19 - 4/22 (ELA and Math) \*

Throughout the school year, Monument Academy will administer a variety of content related tests per state and federal requirements. The assessment calendar details each of the assessments (grades tested, purpose of test, dates of tests, format of tests) [Monument Academy Website](#) .

Per Colorado law (HB 15-1323), parents have the right to refuse to have their child(ren) take state standardized tests marked with an asterisk (\*). Also, per the same law, Lewis-Palmer School District adopted a policy for both paper/pencil and parent opt-out, available on the school district website. Information regarding the process for parent refusal is located on the MA website using this link [Family ID Refusal Form Link](#)

We appreciate positive encouragement of your student's participation in these assessments. If you have any questions, please email Britany Blair at [bblair@monumentacademy.net](mailto:bblair@monumentacademy.net) for any questions regarding CMAS testing for grades 3-5.

You may also find helpful information on our [Monument Academy Website](#) or the state website <http://www.cde.state.co.us/assessment> .



fa52025329 FreeArt

# UPCOMING EVENTS

## Save the Dates:

- April 1<sup>st</sup>- Free Dress Friday
- April 8<sup>th</sup>-18<sup>th</sup>- Scholastic book fair
- April 15<sup>th</sup>- No School
- April 29<sup>th</sup>- Library loans stop



Camp Invention®

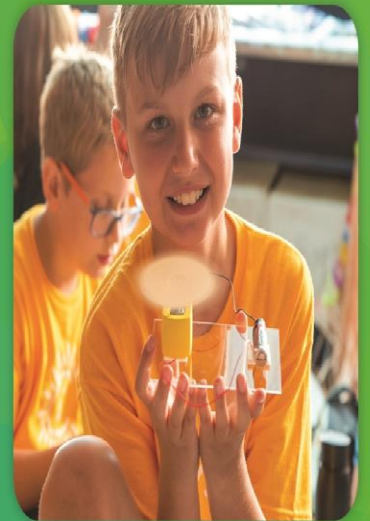


JUMP INTO BIG  
**ADVENTURES**  
THIS SUMMER!

LEARN MORE AT [INVENT.ORG/CAMP](http://INVENT.ORG/CAMP)



*A second grader builds persistence by testing how marbles move through her arcade design!*



*A sixth grader gains confidence as he builds a robot to make awesome spin art!*



*A fourth grader uses problem-solving skills to create a Spacepack for a galactic journey!*

# EXPLORE A TYPICAL DAY AT OUR ALL-NEW 2022 PROGRAM

## A.M. BASE CAMP

Drop off your camper with certified local educators who start each day with games that spark creativity.



### ROBOTIC AQUATICS™:

Campers create a habitat for a robotic fish — complete with a symbiotic friend — and then take their fish home in its mini tank!



### SPACECATION™:

Inspired by real space exploration, campers construct Spacepacks and Astro-Arm devices, mine asteroids and observe ice volcanoes!

## GAMES & LUNCH

Half the campers head outside to play action-packed games while the others eat lunch — and then they switch.



### NIHF'S THE ATTIC™:

Combining science and art to build their own robotic artists, campers make spin art and learn that everyone can be creative!



### MARBLE ARCADE™:

Campers get their game on as they experiment with the fun of physics and engineering to build their own mega marble arcades!

## P.M. BASE CAMP

The day wraps up as campers wind down with problem-solving games.

*All images feature actual campers enjoying our new 2022 program.*

## SECURE YOUR SPOT TODAY

Register at [INVENT.ORG/CAMP](https://www.invent.org/camp) or 800-968-4332

**Grades:** K - 6th

**Location** Monument Academy

1150 Village Ridge Pt, Monument, CO 80132

**Date** June 6 - 10, 2022

**Time & Cost:** 9:00 AM to 3:30 PM  
\$250 (before discount)

**Camp Director:** Andrea Dickey

If these dates/times don't work for you, please visit [invent.org/camp](https://www.invent.org/camp) for other locations near you.

SAVE \$25 WITH CODE  
**EXPLORE25**  
AT [INVENT.ORG/CAMP](https://www.invent.org/camp)  
Offer expires March 31st, 2022



Scan to secure your spot today!

Camp Invention is a nonprofit program of the National Inventors Hall of Fame.

©2021 National Inventors Hall of Fame, Inc.



### Investors in Creativity and Invention

Army Educational Outreach Program  
Burton D. Morgan Foundation  
Nordson Corporation Foundation

Overdeck Family Foundation  
United Way of Summit & Medina

# How Sick is Too Sick?

## When Children and Staff Should Stay Home from School or Child Care

Evaluation of a sick child must consider which diseases are currently circulating among students, staff, and the community. Known exposure to cases or an outbreak of a contagious disease (including but not limited to those listed here), even without a confirmed diagnosis, may necessitate more stringent return to school requirements.

During Colorado's ongoing response to the COVID-19 pandemic, children and staff who have symptoms consistent with COVID-19 should receive testing, and follow the [COVID-19 isolation guidance](#) until testing is completed or if they test positive. If the individual tests negative for COVID-19, the individual should then follow the recommendations for their disease or symptoms using the below guidance.

### There are four main reasons to keep children and adults at home:

1. The child or staff is at risk of infecting others with COVID-19 or another contagious illness, either because of symptoms or recent close contact.
2. The child or staff member does not feel well enough to take part in usual activities. For example, a child is overly tired, fussy or will not stop crying.
3. A child needs more care than teachers and staff can provide while still caring for the other children.
4. The child or staff member has symptoms or an illness is on this list, and staying home is required.

Guidance for COVID-19 Symptoms	Child or staff member must stay home?
--------------------------------	---------------------------------------

**COVID-19 symptoms which must be *fully resolved* before a child or staff member returns to school**

- **Feeling Feverish, having chills or Fever**  
(Temperature of 100.4°F or greater. Babies who are 4 months or younger need to see a doctor right away for a fever of 100°F or higher)
- **Shortness of breath or difficulty breathing**
- **Nausea, Vomiting/Throwing Up**
- **Diarrhea**  
(Frequent, loose, or watery stools (poop) compared to normal ones that are not caused by food or medicine)
- **Cough\***

**Yes** - These symptoms are often present in individuals with COVID-19 and other contagious infectious disease, and a person with any of these symptoms (whether new or worsening from baseline) should first receive a diagnostic test for COVID-19.

**When to seek emergency medical attention**

- **Trouble breathing**
- **Persistent pain or pressure in the chest**
- **New confusion**
- **Inability to wake or stay awake**
- **Pale, gray, or blue-colored skin, lips or nail beds, depending on skin tone**

These are not all possible symptoms. Please call your medical provider for any other symptoms that are severe or concerning to you.  
Call 911 or call ahead to your local emergency facility. Notify the operator that you are seeking care for someone who has or may have COVID-19.

If all symptoms are consistent with the usual symptoms of a known chronic condition and the child is otherwise well enough to return to school, no further evaluation is necessary.

If the test is positive, or the individual has not yet been tested, the individual should follow CDPHE’s isolation guidance, <https://covid19.colorado.gov/isolation-and-quarantine>. Further guidance for the school or child care can be found at <https://covid19.colorado.gov/practical-guide-for-operationalizing-cdcschool-guidance>.

If the test is negative AND the symptoms are explained by a specific illness other than COVID-19, then the child or staff can return to school or child care following exclusion guidelines for that illness.

If the test is negative and the illness is not explained by a new illness or a known chronic condition, the ill individual should still stay home until symptoms have been resolved for at least 24 hours without medication.

\*Students and staff may return if the cough is not fully resolved following discussion with a care provider.

**COVID-19 symptoms which *must be improving* before a child or staff member returns to school or child care**

**Yes** - These symptoms are often present in individuals with COVID-19, and a person with any of these symptoms (whether new or worsening from baseline) should receive a diagnostic test for COVID-19. If all symptoms are consistent with the usual symptoms of a known chronic condition and

<ul style="list-style-type: none"> <li>● Sore throat</li> <li>● Runny nose or congestion</li> <li>● Muscle or body aches</li> <li>● Headache</li> <li>● Fatigue</li> <li>● New Loss of Taste or Smell**</li> <li>●</li> </ul>	<p>the child is otherwise well enough to return to school, no further evaluation is necessary.</p> <p>If the diagnostic COVID test is positive, or the individual has not yet been tested, the individual should follow CDPHE’s isolation guidance, <a href="https://covid19.colorado.gov/isolation-and-quarantine">https://covid19.colorado.gov/isolation-and-quarantine</a>. Further guidance can be found at <a href="https://covid19.colorado.gov/practical-guide-foroperationalizing-cdc-school-guidance">https://covid19.colorado.gov/practical-guide-foroperationalizing-cdc-school-guidance</a>.</p> <p>If the diagnostic test is negative and the symptoms are explained by a specific illness other than COVID-19, then the child or staff can return to school or child care following exclusion guidelines for that illness.</p> <p>If the COVID test is negative and the illness is <b>not</b> explained by a new illness or a known chronic condition, the ill individual may return to school as long as all symptoms are improving and cough, shortness of breath, fever, diarrhea and vomiting have fully resolved.</p> <p>**Loss of taste or smell can persist for weeks or months. This condition does not need to be resolved or improving before an individual returns to school or care.</p>
---	--



Guidance for Symptoms Not Due to a Specific Disease, Following a Negative COVID Test	Child or staff must stay home?
<p><b>Diarrhea</b> Frequent, loose, or watery stools (poop) compared to normal ones that are not caused by food or medicine.</p>	<p><b>Yes</b> - Unless the diarrhea is related to an existing chronic condition, is explained by a diagnosed condition not requiring the person to stay home, or is consistent with the person's baseline.</p> <p>The child or staff member may return to school or child care 24 hours after their last episode of diarrhea unless the diarrhea is caused by an illness that requires them to stay home longer. If the diarrhea is explained by a specific illness, then the child or staff can return to school or child care following exclusion guidelines for that illness.</p>
<p><b>Fever</b> Fever is a temperature of 100.4° F or greater. Babies who are 4 months or younger need to see a doctor right away for a fever of 100° F or higher.</p>	<p><b>Yes</b> - The child or staff member may return to school or child care if the fever has been resolved for 24 hours without fever reducing medications unless the fever is caused by an illness that requires them to stay home longer. If the fever is explained by a specific illness COVID-19, then the child or staff can return to school or child care following exclusion guidelines for that illness.</p>
<p><b>Flu-like Symptoms</b> Fever Sore throat Runny nose or congestion</p>	<p><b>Yes</b> - Children and staff may return to school or child care as long as they are fever-free for 24 hours without the use of fever-reducing medications and other symptoms are improving, unless the symptoms are caused by an illness that requires them to stay home longer. If the symptoms can be explained by a specific illness, then follow the exclusion guidelines for that illness.</p> <p>In consultation with a healthcare provider, additional evaluation for flu-like illnesses, sore throat, and upper respiratory symptoms may be appropriate, including evaluation for strep throat.</p>
<p><b>Vomiting/Throwing Up</b></p>	<p><b>Yes</b> - Unless the vomiting is related to an existing chronic condition or is explained by a diagnosed condition not requiring the person to stay home. If the vomiting is unexplained and inconsistent with the person's baseline state of health, the child or staff member may return 24 hours after their last episode of vomiting. If the vomiting can be explained by a specific illness, then follow the exclusion guidelines for that illness.</p> <p><b>If a child with a recent head injury vomits, seek medical attention.</b></p>

Guidance for Specific Diagnosed Illnesses	Child or staff must stay home?
<p><b>Chicken Pox</b></p>	<p><b>Yes</b> - until the blisters have dried and crusted (usually 6 days), or in immunized people without crusting, until no lesions within 24 hour period.</p>

<b>Conjunctivitis (pink eye)</b> Pink color of eye and thick yellow/green discharge	<b>No</b> - children and adults do not need to stay home unless they have a fever or are not able to participate in usual activities. Call your doctor for advice and possible treatment.
<b>COVID-19</b> (clinical diagnosis, symptoms without testing, or a positive diagnostic test)	<b>Yes</b> - children and staff who have suspected COVID-19 or who have been diagnosed with COVID-19 must be excluded and follow CDPHE's <a href="#">isolation guidance</a> . Guidance for schools and child care settings can be found here: <a href="https://covid19.colorado.gov/cases-and-outbreaks-child-care-schools">https://covid19.colorado.gov/cases-and-outbreaks-child-care-schools</a> .
<b>Fifth's Disease</b> (parvovirus)	<b>No</b> - the illness is no longer contagious once the rash appears.
<b>Hand Foot and Mouth Disease</b> (Coxsackie virus)	<b>No</b> - unless the child or adult has mouth sores, has uncontrollable drooling or is not able to take part in usual activities.
<b>Head Lice or Scabies</b>	<b>Yes</b> - children may stay at school or child care until the end of the day but cannot return until after they have had the first treatment.
<b>Hepatitis A, Salmonella, Shigella, or Shiga-toxin Producing E. coli</b>	<b>Yes</b> - children and staff may return to school or child care when cleared by the health department.
<b>Herpes</b>	<b>No</b> - unless there are open sores that cannot be covered or there is uncontrollable drooling.
<b>Impetigo</b>	<b>Yes</b> - children and adults need to stay home until 24 hours after antibiotic treatment has started.
<b>Ringworm</b>	<b>Yes</b> - children may stay at school or child care until the end of the day but cannot return until after they have had the first treatment. Keep the area covered for the first 3 days if participating in activities with person to person contact.
<b>Roseola</b>	<b>No</b> - unless there is a fever or behavior changes.
<b>Influenza</b>	<b>Yes</b> - Children and staff should remain out of school or child care until they are fever-free for 24 hours without the use of fever-reducing medications and other symptoms have been improving for 24 hours.
<b>Croup, RSV (Respiratory Syncytial Virus)</b>	<b>No</b> - It is recommended that children and staff remain out of school or child care until they are fever-free for 24 hours without the use of fever reducing medications and other symptoms have been improving for 24 hours.
<b>Strep Throat</b>	<b>Yes</b> - for 12 hours after starting antibiotics unless the doctor says that it is okay to return to school sooner.

<b>Other Vaccine Preventable Diseases</b> Measles, Mumps, Rubella (German Measles), Pertussis (Whooping Cough)	<b>Yes</b> - Children and staff can return to school once they are no longer contagious (see Infectious Disease Guidelines). Public health consultation may be necessary.
<b>Yeast Infections</b> Thrush or Candida diaper rash	<b>No</b> - follow good hand washing and hygiene practices.
<b>Other</b> Symptoms or illnesses not listed	Contact the child care center director or school health staff to see if the child or staff member needs to stay home (see Infectious Disease Guidelines).

**This document was developed in collaboration with pediatricians, medical epidemiologists and public health professionals.** The information presented is intended for educational purposes only. It is not intended to take the place of your personal doctor’s advice and is not intended to diagnose, treat, cure or prevent any disease. The information should not be used in place of a visit, call or consultation or advice of your doctor or other health care provider.

**References**

American Academy of Pediatrics. *Managing Infectious Diseases in Child Care and Schools: A Quick Reference Guide*. Aronson SS, Shope TR, eds. 5th ed. Itasca, IL: American Academy of Pediatrics; 2020.20.  
Colorado Department of Public Health and Environment. *Infectious Diseases In Child Care and School Settings: Guidelines for Child Care Providers and Health Consultants, School Nurses and Other Personnel*. 2022.  
Colorado Department of Public Health and Environment. COVID-19 Resources. <https://covid19.colorado.gov/>. October 7, 2020.

Updated March 2022



MONUMENT ACADEMY'S  
INVEST IN TOMORROW

# Lights Camera Auction!

Event benefits our  
School Safety Officer and Teacher Bonuses

*Mix and mingle, pose for a photo op, and get your  
Silent Auction bids in early!*

*Enjoy heavy hors d'oeuvres and drinks  
while reconnecting with friends.*

Champion Auctioneer, Dean Gunter, will keep the energy going  
and your paddles flowing during the Live Auction!

Outbid your friends, have some laughs, and raise money for a  
great cause!

*Live  
Auction*

\$55 PER PERSON

*Cash  
Bar*

APR 7 2022, 6:00-8:30 PM  
BOOT BARN HALL  
COCKTAIL ATTIRE...GLITZ AND GLAM!

Get your tickets while they last! Scan here:



SCAN ME



# STAFF Spotlight

Please see our **Staff Spotlight** of the week

On behalf of Ms. Barrette and Mr. Walker, our Character Spotlight Staff Members of the week are...

**Suzy Benz**, our phenomenal Music Teacher, and our tremendous 2<sup>nd</sup> grade Para **Melissa Adams**! We are so grateful for all you do, and we appreciate your incredible energy, dedication, and compassion! Thank you!

Monument Academy is Hiring.

[Apply here!](#)

We would LOVE for parents to sub as teachers or paras!!





# MONUMENT ACADEMY BOARD OF DIRECTORS

## *Election Information*

### What does it mean to serve on the MA Board of Directors?

As a charter, school policy is set by a volunteer parent Board. Members of the Board work diligently to ensure the school is staying true to the mission and vision of Monument Academy. The Board has two employees, the COO and CFO, and together this team makes decisions for the current and future success of the school.

### Who Can Apply?

- Parents or Guardians of a current Monument Academy student are eligible
- Applicants must be at least 25 years of age
- Applicants should have an enthusiasm for MA and conviction in its purpose

### Election Timeline

#### January - March:

- Complete the application and submit it to the Board
- Meet with 1-2 Board members to ask questions about the position
- Confirm desire to be an official candidate
- Attend as many Board meetings as possible

#### April:

- Give a 5-minute statement of interest at Board Meeting
- Community Q&A session with candidates
- Formal 5-day election held last week of April

#### May:

- Election results announced to the community at Board Meeting

#### June:

- Newly elected Directors sworn in at Board meeting, effective July 1st
- Complete Board training & background check

#### July:

- July 1 begin a 3-year term as a voting member of the MA Board of Directors

Submit an application using the following link:

<https://forms.gle/PTe8BxQmXXjn9SAR6>

Still have questions?

E-mail: [Board@MonumentAcademy.net](mailto:Board@MonumentAcademy.net)

## ***Landsharks Running Club***

Learn the essentials of running and field events at our Summer Camps!

Emphasis will be placed on form, function, stamina, and pace. Athletes, from grades Kindergarten - 8th grade (in Fall 2022), will enjoy learning these skills through games and workouts!

During Track Camp, athletes will become familiar with the javelin, relays, shot put, short distance running, as well as long distance running and everyone's favorite, the hurdles!

## **SUMMER CAMP SESSION/PRICING INFORMATION**

### **Regular Registration**

\$95 begins March 16<sup>th</sup>

### **SESSION 1**

June 6th - 10th, 9:00-10:30 am  
Monument/Bear Creek Elementary  
1330 Creekside Drive  
Monument, CO 80132

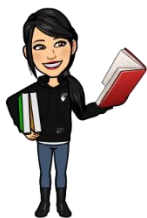
### **SESSION 2**

June 13th - 17th, 9:00-10:30 am  
Mountain Ridge Middle School  
9150 Lexington Drive  
Colorado Springs, CO 80920

### **SESSION 3**

July 11th - 15th, 9:00-10:30 am  
The Vanguard School  
1605 S Corona Avenue  
Colorado Springs, CO 80905

## **[REGISTER HERE](#)**



Mrs. Kelly Collier  
Monument Academy Librarian

# As Promised – Additional Outerwear

Lands' End now has the Crew Sweatshirt, (that MUST have our Monument Academy Logo on it), available for order. Just shop under School Number 900030560. Thank you for your patience.

## \*\*\*VOLUNTEER OPPORTUNITIES!\*\*\*



Thank you to all the WATCH D.O.G.S., it is great to have you back in our school. We have plenty of available openings, grab your spot now.

### Watch Dogs:

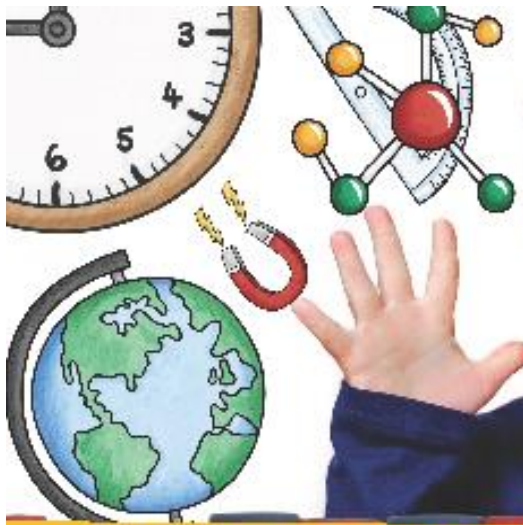
<https://signup.com/go/sVvbhCq>

### Music:

<https://m.signupgenius.com/#!/showSignUp/4090949aba822aa8-5thgrade>







## NEW VOLUNTEER TRACKING PROGRAM



Follow the code to register!

### WHY VOLUNTEER?

Volunteer Hours help our school, staff, bonds for school buildings, and grants!

We have a new volunteer portal with all events in one place and an easy way to log/track your hours.

Whether you can help in person or from home, we have a wide range of ways to get involved.



## From the Library:

Library needs help for the book fair! Volunteer for the April Book Fair! Earn a tax-free purchase by volunteering during the fair:

<https://www.trackitforward.com/site/629405/events>

**Scholastic Book Fair is coming to the West campus April 8<sup>th</sup>-18<sup>th</sup>. Closed April 15<sup>th</sup>**

<https://www.scholastic.com/bf/monumentacademy2>

Load eWallets by following the book fair link.

### **Key eWallet features:**

Free and fast eWallet account set up,

Funds are immediately available,

Great way for students to select their own books

After the Fair, remaining eWallet funds are not returned to a credit card and instead become a donation to help buy books for MA.

**Fair is open 7:45am-3:30pm in the Library**

**Shop book fair Online! Shopping Days: 4/8 -4/21**

<https://www.scholastic.com/bf/monumentacademy2>

Landsharks Running Club - the Spring Landshark practices will begin soon

**Practices M/W 3:30-4:05pm at Monument Academy's West Campus Bring running shoes, clothes, and water bottles to each practice.**

**First practice 4/11 3:30-4:05pm**

**Parent meeting 4/11 3:45pm in the library with Coach Collier while asst coaches run the first practice**

We will be using the gym and outside turf field for practices

Parents pick up their runners at the end of practices by following the normal carline procedures

Meets will take place at Lewis Palmer Middle School. Runners, please arrive by 2:40pm and check in with a coach.

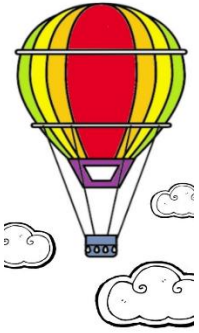
Meets will be Sunday afternoons at 3:00 PM on April 24<sup>th</sup>, May 1<sup>st</sup>, & May 8<sup>th</sup>

### MA Library loans stop April 29<sup>th</sup>, 2022

Please pay remaining library fines and return all materials loaned out No Later Than 4/29/22, thank you!

If paying by check, make check payable to Monument Academy and *To the Attention of Mrs. Collier, MA Librarian*

If paying with credit card, please follow the link and include that it is a payment for library materials. <https://www.monumentacademy.net/quick-links/online-payments/> You do not need to have a PayPal account if you check out as a guest user.



## 20 Book Challenge

Embark on  
a journey!  
Expand your world.

Mrs. Collier's reading challenge for students in K-10<sup>th</sup> grades ends April 4<sup>th</sup> (20 books total if you complete the Challenge!) Claim your prizes by April 4<sup>th</sup>.

Thank you for taking the 20 Book reading challenge!

Mrs. Collier [kcollier@monumentacademy.net](mailto:kcollier@monumentacademy.net)



April's reading challenge is through the Rocky Mountain Vibes Baseball program.

Read with Toasty and Mrs. Collier from April 4<sup>th</sup> – 29<sup>th</sup>

- Week 1 - Great Clips coupon
- Week 2 - Rita's Italian Ice coupon
- Week 3 - Whirly ball – Free hour of bowling
- Week 4 - A pair of tickets to the Vibes 2022 Season opener



In May we'll kick off summer reading programs together with MA and the PPLD librarians! Keep kids from 0-18 engaged this summer by using these two great programs. More information as May draws nearer.



Kelly Collier

Librarian

**ORDER A 2021-2022**  
**YEARBOOK**  
**WITH YOUR PHONE**



 scan this!

**Your memories. Your moments. Your year.**  
**OUR YEARBOOK**

**Monument Academy**

# 2022 MA Cheerleading Tryouts



## MANDATORY INFORMATIONAL MEETING

Tryouts are open to incoming 6<sup>th</sup>, 7<sup>th</sup>, and 8<sup>th</sup> graders.

**April 11<sup>th</sup> from 5:00-6:00** at Monument Academy East in room 2023 Prospective cheerleader and a parent/guardian **must** attend this meeting in order to try out.

Grades must be a C or above in order to tryout.

## MANDATORY TRYOUT CLINIC

April 27<sup>th</sup> and 28<sup>th</sup> from 4:00-6:00 in the MA East Gym

## TRYOUT DATE

April 29<sup>th</sup> at 1:30 in the MA East Gym



No Previous Cheer  
Experience or Tumbling  
Skills Required

A yellow starburst graphic with a black outline, containing the text 'No Previous Cheer Experience or Tumbling Skills Required' in black, slanted font.

For question or additional information, you may contact Coach Sarah Thompson at [sthompson@monumentacademy.net](mailto:sthompson@monumentacademy.net)

## MA PTO WEST NEWS



PTO General Meeting will be April 6<sup>th</sup>.  
It will be held in the PTO room (125) at MA-West  
at 8:30am. Light refreshments will be served.  
(The room is on the first floor, first room past the exit to the playground.)

---

**WOULD YOU LIKE TO HELP MA EARN CASH EACH TIME YOU SHOP!**



**King Sooper Community Rewards** program is active for MA. It is easy and does not cost anything. It is super easy to set-up and then automatic every time you shop. It does not take away from your personal fuel points or coupons. Our PTO will simply get a percentage back of all purchases.

### **Sign Up today to Help MA:**

1. Log on to your personal account on Kingsoopers.com (you cannot do this from the app)
2. Click "My account" under Valued Customer tab at the top of the page
3. Community Rewards (menu on the left side)
4. Add Organization: type in "Monument Academy," then click Monument Academy "BF553"
5. Enroll

PTO Volunteer/Event Spotlight



Meet Amy Davis! Amy has jumped right in to help the PTO this year. This year Amy helped organize the craft fair. After not being able to have the fair last year, we were really excited to bring this event back! It was amazing seeing how talented our Monument Academy Students are. Amy is helping out in other areas for the PTO too. Another one of the fun things Amy is doing is helping us love on our staff. Amy set up a birthday cake in the teacher's lounge to help celebrate our amazing staff.

Thank you, Amy, for serving on the PTO.



**Summer Workbooks are NOW available!**

They will be available through April 15<sup>th</sup>!

[Monument Academy PTO Store – MA West PTO Store](#)



# Spirit Night

Tuesday April 12, 2022 5-7pm



**Support Monument Academy PTO by dining in or ordering Drive Thru. Make sure to let them know you are there to support MA.**



**Northgate FSU**  
391 Spectrum Loop, Colorado Springs, CO 80921  
[www.cfanorthgate.com](http://www.cfanorthgate.com)  
[www.facebook.com/cfanorthgate](https://www.facebook.com/cfanorthgate)

© 2021 CFA Properties, Inc. All trademarks shown are properties of CFA Properties Inc.





### **ARE YOU INTERESTED IN SERVING ON THE PTO?**

The PTO is a fun way to get more involved with Monument Academy and work with an incredible team!  
Please contact [maptopresident@gmail.com](mailto:maptopresident@gmail.com) for more information.

### **YOU CAN FIND US ON FACEBOOK**

(West Campus) <https://www.facebook.com/MonumentAcademyPTO/>

#### **CONTACT US:**

President - [maptopresident@gmail.com](mailto:maptopresident@gmail.com)  
Vice President - [maptovicepresident@gmail.com](mailto:maptovicepresident@gmail.com)  
Treasurer - [maptotreasurer@gmail.com](mailto:maptotreasurer@gmail.com)  
Secretary - [maptosecreatry@gmail.com](mailto:maptosecreatry@gmail.com)